



**EFFFE** 3TI  
PACKAGING TECHNOLOGIES

**FACILE**  
semi-automatic wrapping machine



PACKAGING  
MADE IN ITALY  
SINCE 1999

*Your Products, Our Care*



# FACILE

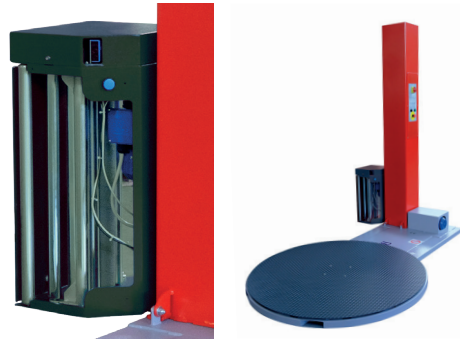
## MAIN FEATURES

- Forklifting rotating table with 1500 mm diameter and 1200 kg capacity
- Wrapping height detected by photocell
- Variable rotating speed from 6 to 12 rpm with smooth rotation start/stop
- Variable film carrier speed from 3 to 5 m/min.
- Reinforcement wraps
- Hinged column for transport



MOTORIZED  
PRE-STRETCH  
(mod. ZERO.5)

## 3 MODELS 3 PERFORMANCE LEVELS



**ZERO.5**  
with motorized pre-stretch



**ZERO.3**  
with electromagnetic brake



**ZERO.1**  
with mechanical brake

*The FACILE semi-automatic wrapping machine stands out for its ease of use, low maintenance requirements and excellent quality/price ratio.*

*The three available models ensure coverage of any pallet wrapping requirement for small and medium-sized industries.*

*Perfectly **Plug&Play** also thanks to the 230V/50Hz power supply, it is equipped with a simple and intuitive control panel that provides:*

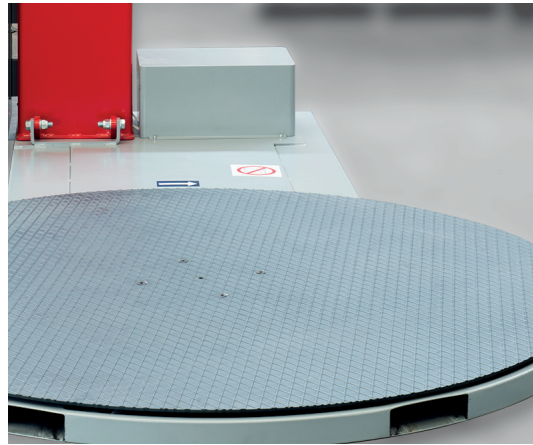
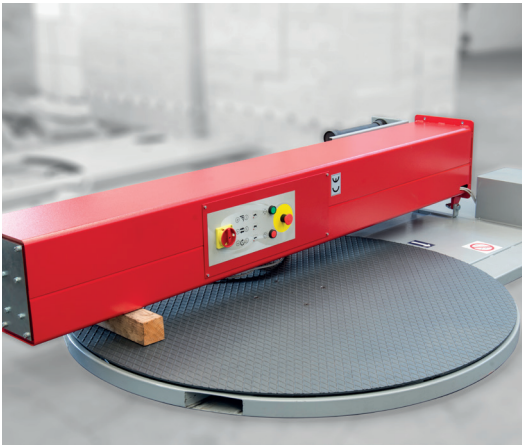
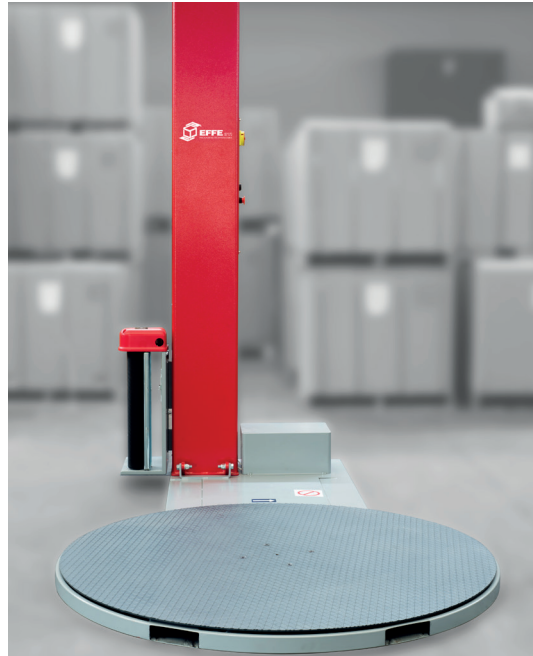
- Double cycle
- Double cycle with manual stop for simple cycle with reset or top sheet positioning and automatic cycle restart
- Manual reinforcement wraps

*Among the available options:*

- Rotating table with 1650 mm diameter and 2000 kg load capacity
- Wrapping height 2100 mm, 2600 mm.
- Black products photocell

# ZERO.1/.3/.5

semi-automatic wrapping machine



The perfect solution for switching from the tiring and sometimes risky work of manually wrapping products on pallets to automating the packaging process, saving time and money.

**Optimize work in the packaging department, improve your company image, and save on stretch film (with motorized pre-stretch, model ZERO.5).**



At EFFE3ti, we care deeply about innovation and are committed to continuous product development. Safety is a priority, which is why all FACILE models comply with the applicable Machinery Directive: a guarantee of production in compliance with health, safety, and environmental requirements.

FACILE is an Italian product and is manufactured in Italy.

## TECHNICAL FEATURES

- Forklifting rotating table  $\varnothing$  1500 mm capacity 1200 kg
- Wrapping height detected by photocell
- Variable rotating speed from 6 to 12 rpm with smooth rotation start/stop
- Adjustable film carrier speed from 3 to 5 m/min.
- Reinforcement wraps
- Hinged column for transport

## OPTIONALS

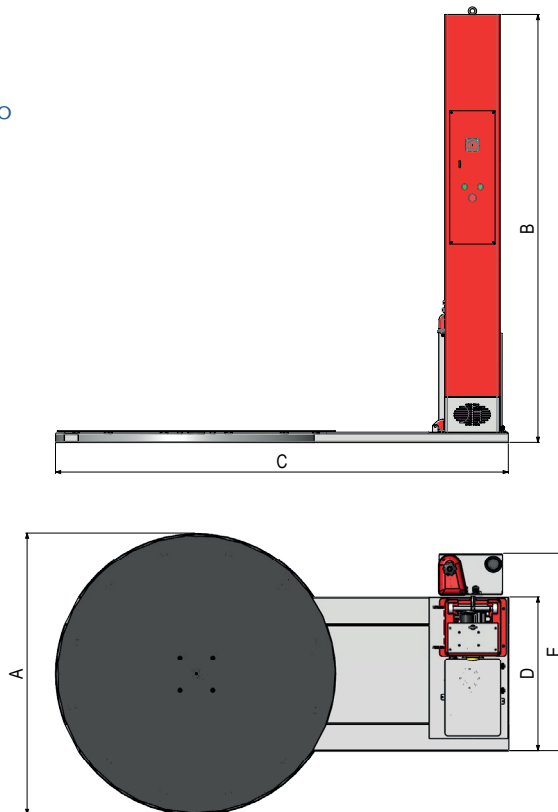
- Rotating table diameter 1650 mm with load capacity up to 2000 kg.
- Wrapping height 2100 mm, 2600 mm.
- Black products photocell

## POWER SUPPLY

- 230 V single phase
- 50 Hz
- 0.7 kW
- Aux. 24 V DC

## FILM (LLDPE) AND REEL CHARACTERISTICS

- Thickness:  $12 \div 23 \mu\text{m}$
- Suggested thickness:  $20 \mu\text{m}$
- Internal diameter: 76 mm
- Height: 500 mm
- Maximum weight: 20 kg
- Maximum diameter: 250 mm



	A		B		C		D	E
	$\varnothing$ 1500	$\varnothing$ 1650	H=2200	H=2600	$\varnothing$ 1500	$\varnothing$ 1650		
ZERO.1	1520	1670	2311	2711	2445	2595	830	1066
ZERO.3	1520	1670	2311	2711	2445	2595	830	1066
ZERO.5	1520	1670	2311	2711	2445	2595	830	1066

Dimensions in mm

R2505

follow us



[www.ffe3ti.com](http://www.ffe3ti.com)

EFFE3ti srl | C.so Garibaldi 298 | GATTINARA (VC) ITALY | +39 0163 828911

**FACILE**  
semi-automatic wrapping machine

