

EFFFE 3TI
PACKAGING TECHNOLOGIES

SPINNY S300
semi-automatic wrapping machine



MADE IN ITALY
SINCE 1999

Your Products, Our Care



SPINNY

MAIN FEATURES

- Standard model: rotary table diameter 1500 mm, load capacity up to 1200 kg and wrapping height up to 2100 mm.
- Other diameters available: 1650 mm, 1800 mm or 2200 mm and 2400 mm, with load capacity up to 2000 kg or 2500 kg on demand.
- Other wrapping heights available:
 - up to 2600 mm;
 - up to 3100 mm;
 - up to 3600 mm.

PACKAGING MACHINE WITH MOTORIZED PRE-STRETCH FOR FILM SAVINGS OF UP TO 400%



The **MOTORIZED PRE-STRETCH** system is a device that **reduces the amount of stretch film** used to wrap each pallet, maintaining excellent product stability (even for lightweight and unstable products, which would otherwise be impossible to wrap with traditional systems) and ensuring film elongation of **up to 300%** (1 m of film = 4 m of film applied to the pallet with 300% pre-stretch).

The stretch film is dispensed and pre-stretched at a constant tension using rollers, thanks to an electronic system that monitors the speed.

2-MOTORS PRE-STRETCH (OPTIONAL)

Based on the same concept as the single motor pre-stretch, the DUAL MOTOR version has been designed to guarantee even **greater savings**, up to a variable stretching of the stretch film that can reach **400%** (1m of film = 5m of film applied to the pallet with 300% pre-stretch).

ROPING (OPTIONAL)

Furthermore, on both pre-stretch systems, it is possible to reinforce the film laps on the pallet using the **cord reduction system**: this allows the film cross-section to be reduced, creating a real ultra-resistant "cord" that therefore guarantees **greater product stability**.



MOTORIZED
PRE-STRETCH

S300

semi-automatic wrapping machine

WHY SPINNY S300?

- It uses less stretch film than a traditional pallet wrapper
- It allows for perfect and **uniform** wrapping of all pallets
- Ensures **stability of the product** because it is well secured to the pallet for transport
- Improves the image of pallets compared to manual wrapping
- **Minimal maintenance** required
- Extremely **easy to use**
- **3-year warranty**

eclectic
SPINNY

ENDLESS POSSIBILITIES

Spinny S300 is a flexible and easy to customize wrapping machine that meet the most diverse needs.

Here are some of the many possible variations.

CONTACT US TO FIND OUT MORE!



IN STAINLESS STEEL OR
FOR LOADING WITH PALLET
TRUCKS



WITH STABILIZING PRESS



WITH DOUBLE ROTARY
TABLE

SPINNY S300 is a pallet wrapping machine that immediately improves the efficiency of company logistics **by eliminating the annoying, time-consuming and often dangerous manual wrapping operations.**

Available with automatic cutting of the stretch film at the end of the cycle (optional) to improve work ergonomics.



At EFFE3ti, we care deeply about innovation and are committed to continuous product development. Safety is a priority, so all SPINNY models comply with the applicable Machinery Directive: a guarantee of production in compliance with health, safety, and environmental requirements.

TECHNICAL CHARACTERISTICS

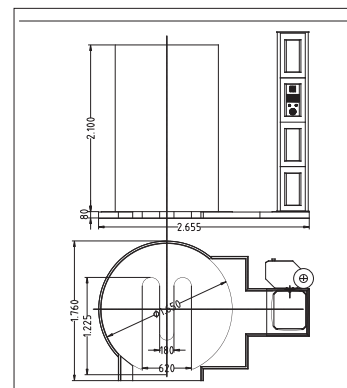
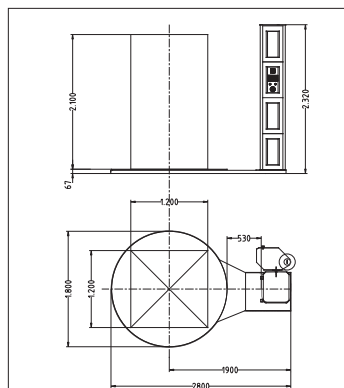
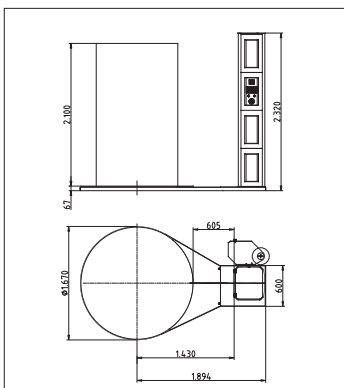
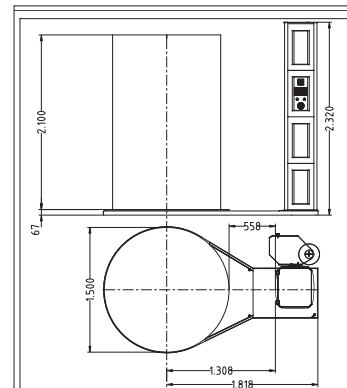
- Pre-stretch ratio up to 300%. Standard 200%
- Column-rotating table distance 500 mm
- Wrapping height detected by photocell
- Table rotation regulated by inverter (5-10 rpm)
- Table stop position controlled by sensor
- Adjustable reel carriage speed
- Fall arrest system for the reel trolley
- PLC-controlled work cycles
- 10 wrapping programs
- Separately adjustable top and bottom reinforcement wraps
- IP55 protection

POWER SUPPLY

- Tension: 230 V single phase
- Frequency: 50 Hz
- Installed power: 1.3 kW
- Auxiliary power supply: 24 V DC

FILM (LLDPE) AND REEL CHARACTERISTICS

- Thickness: 12 ÷ 23 µm
- Suggested thickness: 20 µm
- Internal diameter: 76 mm
- Height: 500 mm
- Maximum weight: 20 kg
- Maximum diameter: 250 mm



R2602

follow us



www.ffe3ti.com

EFFE3ti srl | C.so Garibaldi 298 | 13045 GATTINARA (VC) ITALY | +39 0163 828911



SPINNY S300
semi-automatic wrapping machine